

**Cast Iron Meter Bars**

*Horizontal inlet and outlet*



Series	Centerline
6610-B*	6"
6600-B	6 1/2"
6640-B	7"

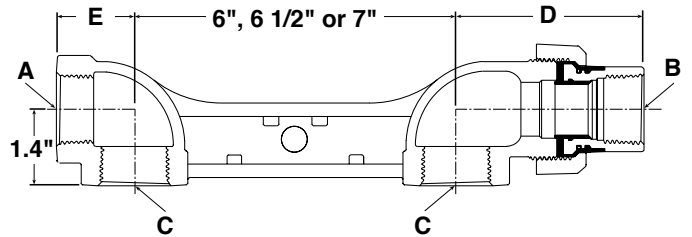
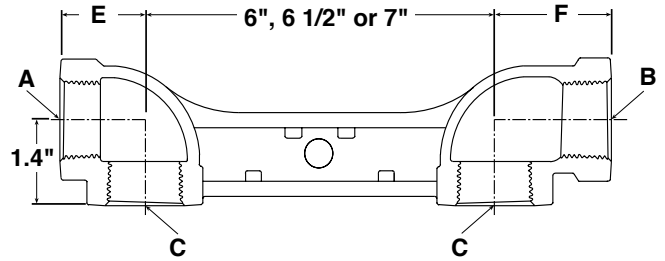
FIP X FIP, \*MIP Outlet Option Available



Series	Centerline
6610	6"
6600	6 1/2"
6640	7"

FIP X UNION\*

- \* - Insulated O-Ring or Flat Gasket
- Non-insulated O-Ring or Flat Gasket



A	B	C	D	E	F	Centerline
3/4	3/4	3/4	3.3	1.4	2"	6" and 6 1/2"
1	1	1	3.4	1.4	2"	
3/4	1	3/4	3.4	1.4	2"	
1	1	3/4	3.4	1.4	2"	
3/4	3/4	1	3.4	1.4	2"	7"
1	3/4	3/4	3.3	1.4	2"	
1 1/4	1 1/4	1 1/4	3.5	1.4	2"	

*Horizontal inlet and vertical outlet*



Series	Centerline
6614-B	6"
6604-B	6 1/2"
6644-B	7"

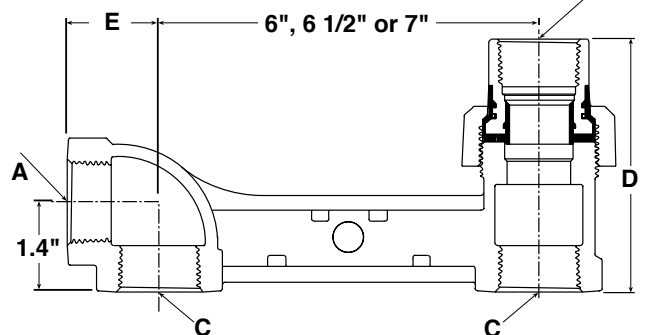
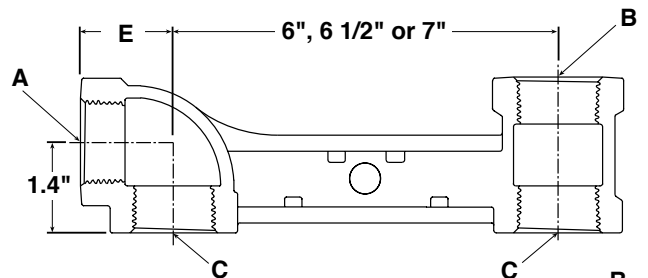
FIP X FIP



Series	Centerline
6614	6"
6604	6 1/2"
6644	7"

FIP X UNION\*

- \* - Insulated O-Ring or Flat Gasket
- Non-insulated O-Ring or Flat Gasket



A	B	C	D	E	Centerline
3/4	3/4	3/4	3.8	1.4	6" and 6 1/2"
1	1	1	3.9	1.4	
3/4	1	3/4	3.9	1.4	
1	1	3/4	3.9	1.4	
3/4	1	1	3.9	1.4	7"
1	3/4	3/4	3.8	1.4	
1 1/4	1 1/4	1 1/4	4.2	1.75	

\*For side taps, add letters. See page 16 & 17.

\*For other options, see page 17.

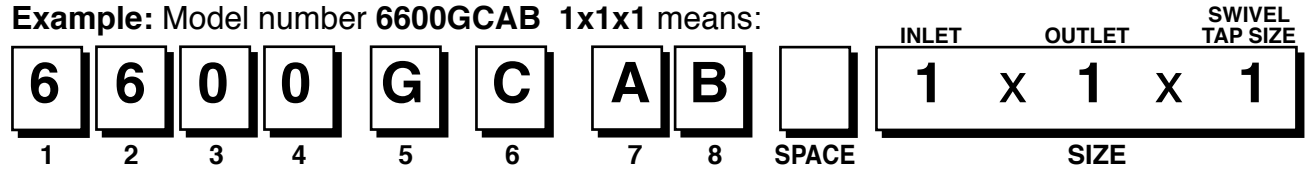
\* NOTE: All dimensions shown are for reference only. Contact factory if specific dimensional values or tolerances are required.

## Ordering Meter Bars

**A.Y. McDonald Mfg. Co. Gas Meter Bars** can be ordered to fit your requirements. Select the features you need from list below and build your own ordering number. Please note the difference in numbers between regular meter bars, and meter bars with built in swivels. Meter bars with swivels have two extra blocks before the size to select the size and type of swivels.

### GAS METER BARS

**Example:** Model number **6600GCAB** 1x1x1 means:



- BLOCK 1**  
6 = All meter bars
- BLOCK 2 · METER BAR TYPE**  
3 = Bypass meter bar, 1" 2-port valve, 1", 3-port valve  
4 = Bypass meter bar, two 1", 3-port valves  
5 = Standard meter bar w/integral MIP inlet  
6 = Standard meter bar  
7 = Meter bar with integral 3/4" valve (relube-unless specified differently)  
8 = Meter bar with integral 1" valve (non-relube-unless specified differently)  
9 = Meter bar with 3/4" union valve (sleeved)
- BLOCK 3 · METER BAR SPREAD**  
0 = 6 1/2" spread  
1 = 6" spread  
2 = 6" spread w/integral meter swivels  
4 = 7" spread  
5 = 11 1/8" spread  
6 = 6" spread w/integral cast meter swivels  
7 = 8 1/4" spread w/integral cast meter swivels
- BLOCK 4 · END CONFIGURATION/BAR TYPE**  
0 = Horizontal inlet by horizontal outlet  
1 = Back inlet by back outlet  
2 = Direct center (back) inlet by vertical outlet  
3 = Direct center (back) inlet by horizontal outlet  
4 = Horizontal inlet by vertical outlet  
5 = Horizontal inlet by back outlet  
8 = Vertical inlet by vertical outlet  
9 = Vertical elbow inlet x horizontal outlet

- BLOCK 5 · FINISH/PACKING CONDITIONS**  
- = Black cast iron finish  
A = Black finish, meter bar with 3/4" non-relube integral valve  
G = Zinc and Clear Chromate finish  
L = Alternate Locking  
N = CMMC Style meter bar with lockwing - zinc plated finish  
P = Painted finish  
W = Black finish packed with separate 30LT nuts, gaskets & offset swivels  
X = Bulk packed (painted finish)  
Y = Bulk packed (zinc finish)  
Z = Bulk packed (black finish)
- BLOCK 6 · OUTLET END TYPE**  
A = Compression steel pipe union (inlet and outlet)  
C = Female insulated O-ring union  
D = Female insulated O-ring union (reducing NPT)  
E = Female insulated flat gasket union (reducing NPT)  
F = Female insulated flat gasket union  
S = Female non-insulated O-ring union  
U = Female non-insulated flat gasket union (reducing NPT)  
W = Female non-insulated flat gasket union (reducing NPT)  
H = Male insulated O-ring union  
J = Male insulated flat gasket union  
K = Male non-insulated O-ring union  
L = Male non-insulated flat gasket union  
B = Female integral  
M = Male integral

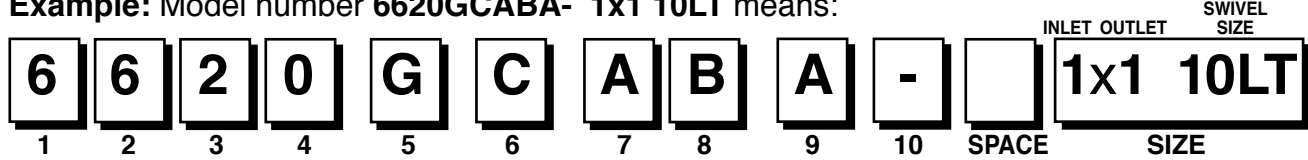
- BLOCK 7 · TAP(S) POSITION**  
- = No tap  
SINGLE TAP      MULTIPLE TAPS  
A = Pos. A      E = Pos. A & B  
B = Pos. B      H = Pos. A & C  
C = Pos. C      J = Pos. A & D  
D = Pos. D      K = Pos. B & C  
L = Pos. B & D  
N = Pos. C & D  
  
See drawing on page 16 for positions  
Q = Pos. A, B & C  
R = Pos. A, B & D  
T = Pos. A, C & D  
W = Pos. B, C & D  
X = Pos. A, B, C & D

- BLOCK 8 · TAP PLUG SIZE/TYPE\***  
- = No tap  
A = 1/8" NPT recessed hex head plug  
B = 1/8" NPT square head plug  
C = 1/8" NPT - no plug  
D = 1/4" NPT recessed hex head plug  
E = 1/4" NPT square head plug  
F = 1/4" NPT - no plug  
G = 3/8" NPT recessed hex head plug  
H = 3/8" NPT square head plug  
J = 3/8" NPT - no plug  
K = 1/8" NPT square head plug-raised bosses  
L = 1/8" NPT hex head plug-raised bosses  
M = 1/8" NPT hex head plug  
N = 1/4" NPT square head plug in inlet and 1/8" recessed hex head plug in outlet

**\*For mixed combinations, contact factory.**

### GAS METER BARS WITH INTEGRAL SWIVELS

**Example:** Model number **6620GCABA- 1x1 10LT** means:



- BLOCK 9 · SWIVEL SIZE AND TYPE**  
A = 10 LT    10 Light swivel with flat gasket seal  
B = 20 LT    20 Light swivel with flat gasket seal  
C = 20 LTO   20 Light swivel with o-ring seal  
D = 30 LT    30 Light swivel with flat gasket seal  
E = 30 LTO   30 Light swivel with o-ring seal  
F = OEM      O-Emco swivel with flat gasket seal  
G = OEMO    O-Emco swivel with o-ring seal  
H = 1A      #1A Sprague swivel with flat gasket seal  
J = 1AO      #1A Sprague swivel with o-ring seal

- BLOCK 10 · SPECIAL SWIVEL COMBINATIONS**  
- = Standard swivels and nuts (same as block #5)  
A = Swivel gaskets or o-rings assembled with the wrap  
B = Brass swivels and nuts  
C = Brass swivels and standard nuts (same as the bar)  
D = Brass nuts and standard swivels (same as the bar)  
G = Zinc Coated with a Clear Chromate finish swivels and nuts  
H = Zinc Coated with a Clear Chromate finish **nuts only**  
P = Zinc and yellow chromate plated **nuts only**  
Q = Zinc with yellow chromate plated **nuts only**, gaskets attached to bar.

**NOTE:** Blocks 1 through 8 use the same designations as meter bars without integral swivels.